

LODGEPOLE

TRIPLEX | TOWNHOME
2 BEDS, 2.5 BATHS
1,543 SQ FT

CHARMING DESIGN WITH ROOM TO GROW

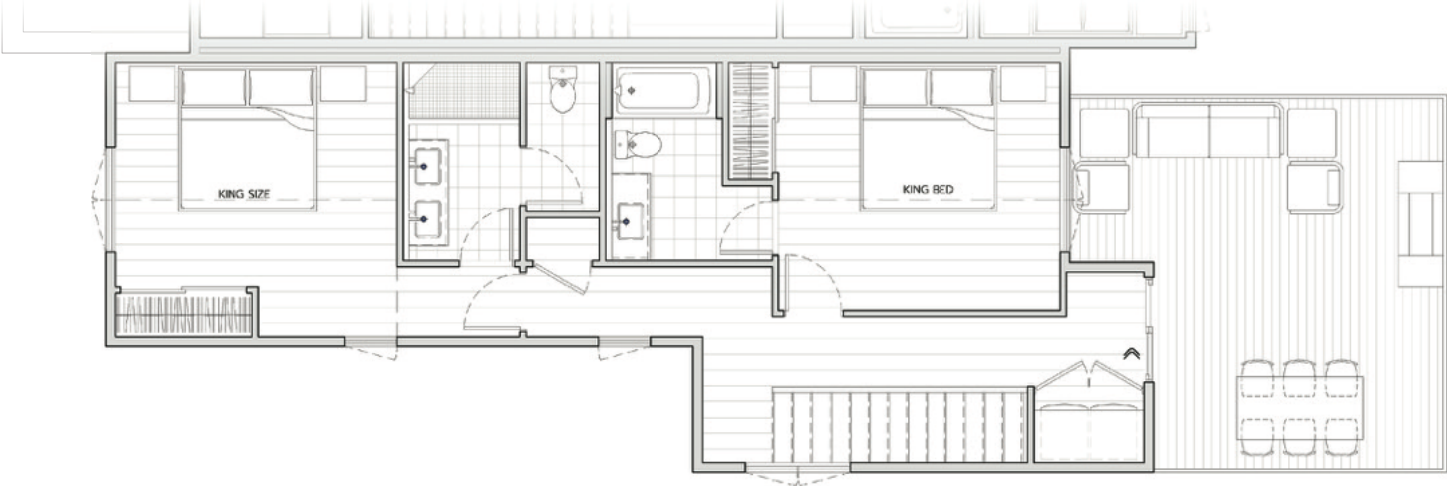
Lodgepole offers comfortable, high-style living in a beautifully designed two-bedroom townhome on Harrison Street's sought-after north end. Enjoy a bright, functional kitchen, an east-facing deck perfect for morning coffee, and a spacious south-facing yard for outdoor enjoyment. Part of a thoughtfully planned triplex, this home features a signature covered porch, a rear deck, and two partially covered parking spaces. With its inviting layout and unbeatable price, Lodgepole is a rare find in Buena Vista.



RESIDENCE FEATURES

- | | |
|-----------------------|-----------------------------------|
| View of the mountains | Unique, contemporary design |
| Second-story deck | Exterior gear storage |
| Two primary suites | Cathedral ceilings |
| Covered front porch | Expansive south patio space |
| Upstairs laundry | Alley access |
| Mudroom | Wood-burning fireplace (optional) |
| Designer kitchen | |

— UPPER LEVEL —



— LOWER LEVEL —

