

PINYON

SINGLE-FAMILY HOME
3 BEDS, 2.5 BATHS
1,796 SQ FT

BOLD DESIGN ROOTED IN NATURE

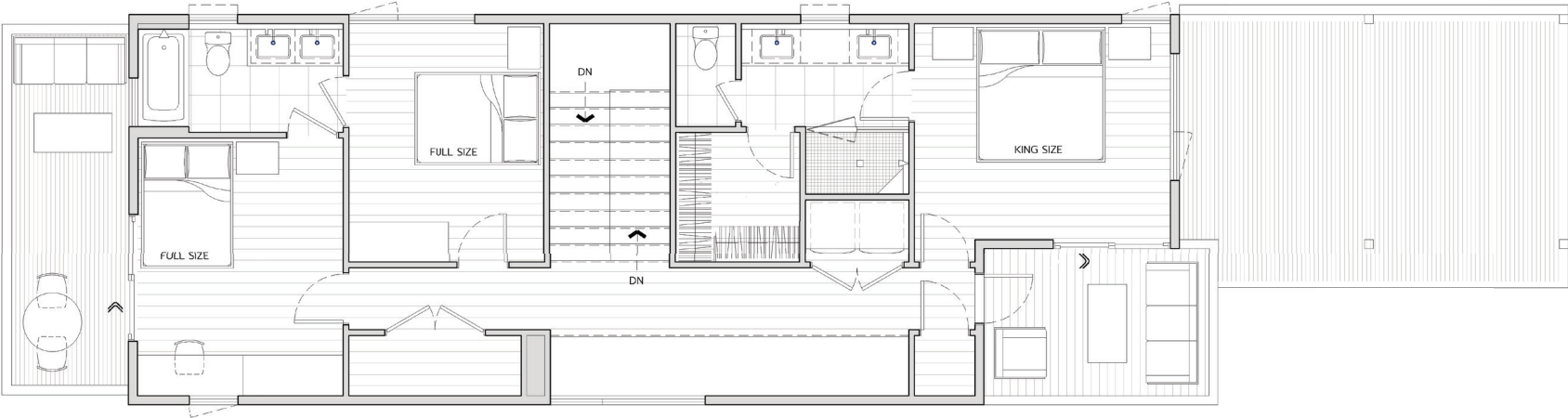
Inspired by the land's original pinyon pine groves, Pinyon blends southwestern character with striking modern design. Enjoy a dramatic double-height walkway, unique kitchen layout, and indoor-outdoor flow with a private second-story deck off the primary suite. Take in epic mountain views from both a spacious front porch and upper balcony. With two covered parking spots and generous gear storage, this home is mountain luxury reimagined at The Crossing.



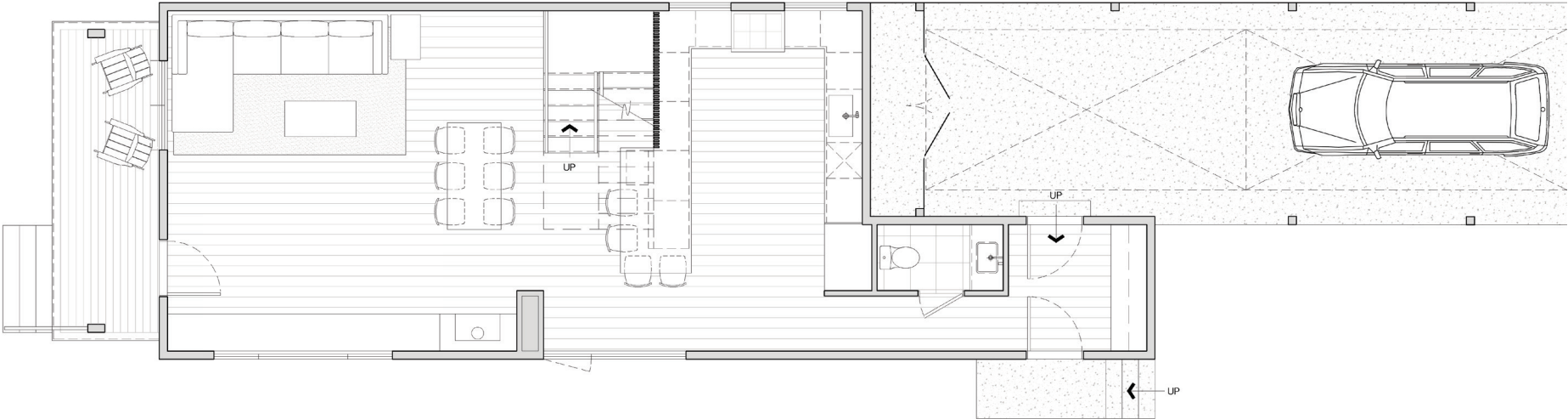
RESIDENCE FEATURES

- | | |
|---------------------|--|
| Designer kitchen | Attached oversized one car parking |
| Upstairs laundry | Unique, contemporary design |
| Covered front porch | Exterior gear storage |
| Powder room | Second-floor balcony with views of the mountains |
| Upstairs laundry | Alley access |
| Floating staircase | Wood-burning fireplace (optional) |

— UPPER LEVEL —



— LOWER LEVEL —



ALPINE

SINGLE-FAMILY HOME
3 BEDS, 2.5 BATHS
1,689 SQ FT

BRIGHT, EFFICIENT, AND BUILT FOR ADVENTURE

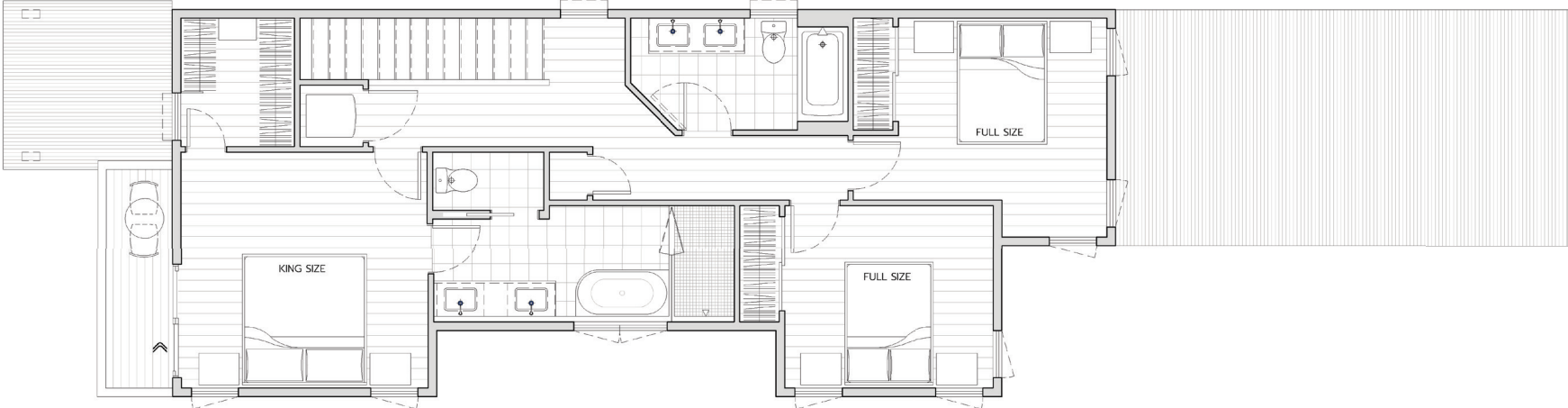
Discover Alpine at The Crossing – where modern design meets true mountain spirit. This smart layout features a sunny kitchen with banquette dining, a south-facing patio, and a luxe primary suite with a private balcony. With two more bedrooms upstairs and an oversized carport for gear, this home is your basecamp for Buena Vista living.



RESIDENCE FEATURES

- | | |
|-----------------------------|--|
| Covered front stoop | Five-piece primary with free-standing tub |
| Exterior gear storage | Attached, covered, oversized one car parking |
| Designer kitchen | West-facing balcony with mountain views |
| Banquette dining | Large, side-yard patio space |
| Upstairs laundry | Alley access |
| Unique, contemporary design | Wood-burning fireplace (optional) |

— UPPER LEVEL —



— LOWER LEVEL —

