

ESTRELLA

TRIPLEX | CONDO
2 BEDS, 1 BATH
925 SQ FT

CHIC & GROUNDED MOUNTAIN LIVING

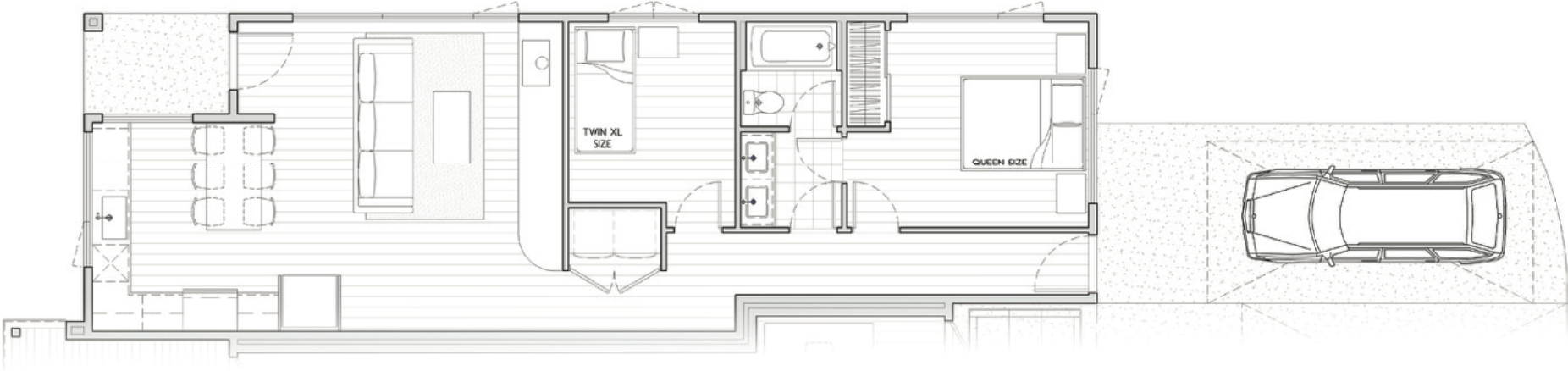
Welcome to Estrella – a beautifully crafted ground-level one-bedroom home in The Crossing’s vibrant north end on Harrison Street. Enjoy premium finishes, dedicated parking, a flexible bonus room for an office or bunkroom, and a private backyard perfect for your furry companion. Thoughtful, efficient, and full of charm – your Colorado lifestyle starts here.



RESIDENCE FEATURES —

- | | |
|---------------------|-----------------------------------|
| Covered front stoop | Unique, contemporary design |
| Designer kitchen | Alley access |
| Flexible extra room | Wood-burning fireplace (optional) |

— LOWER LEVEL —



CIELO

TRIPLEX | CONDO
2 BEDS, 2 BATHS
1,410 SQ FT

ELEVATED COMFORT WITH ICONIC VIEWS

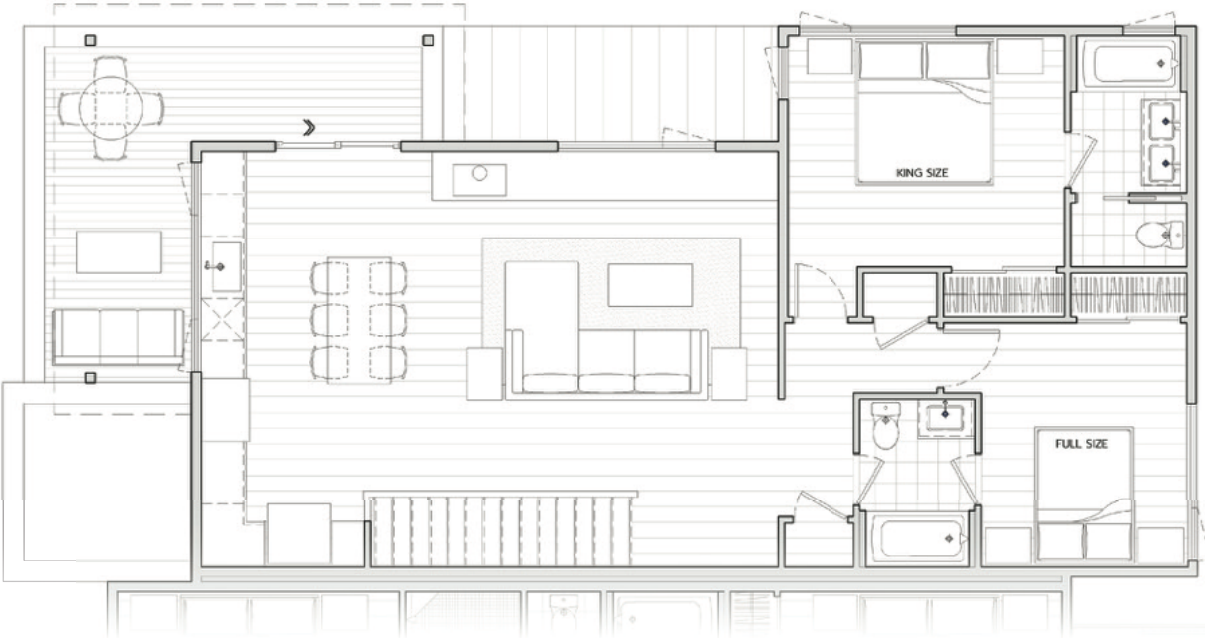
Step into Cielo – a stunning two-story entry level condo on Harrison Street’s north end offering a bright second-floor living space, a luxurious primary suite, and a covered wraparound deck with panoramic Collegiate Peaks views. The main level features a versatile room for work or guests and direct backyard access. Stylish, spacious, and mountain-ready in every way.



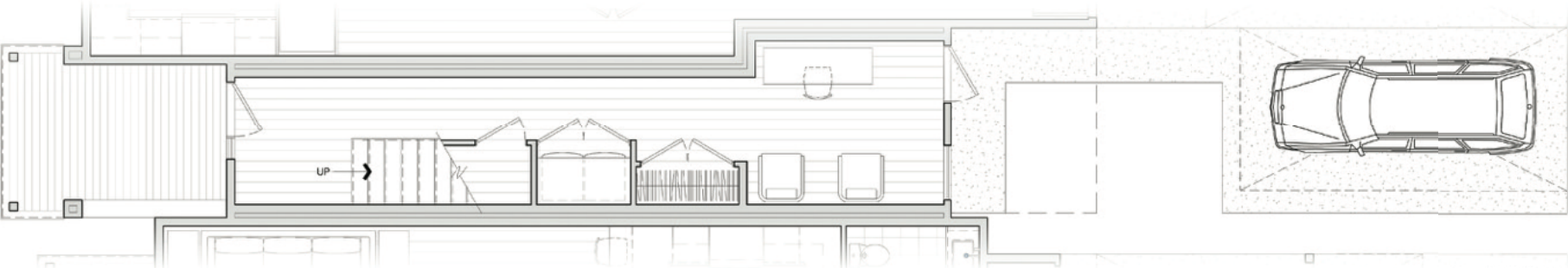
RESIDENCE FEATURES

- Primary suite
- Covered entry stoop
- Designer kitchen
- Unique, contemporary design
- Main floor 2nd level with views
- Covered rooftop deck with mountain views
- Alley access
- Wood-burning fireplace (optional)

— UPPER LEVEL —



— LOWER LEVEL —



BRISTLECONE

DUPLEX | CONDO
2 BEDS, 2 BATHS
1,208 SQ FT

UPSCALE COMFORT WITH A COMMUNITY FEEL

Welcome to Bristlecone — a spacious two-bedroom, two-bath home that offers premium living at an approachable price. Perfect for first-time buyers or those seeking a refined mountain retreat, this unique design features a private double-height entry and an open-concept second-floor layout. Step onto the expansive west-facing deck and take in stunning Collegiate Peaks views. With shared lot ownership under a simple condominium agreement, Bristlecone offers both convenience and connection in the heart of The Crossing.



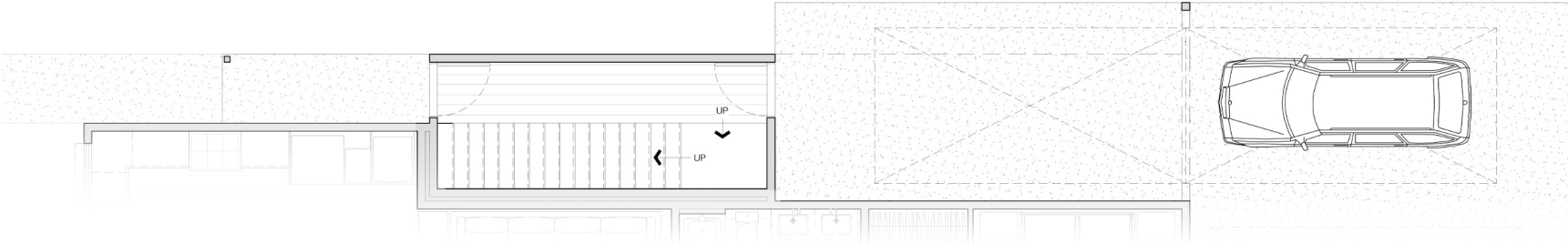
RESIDENCE FEATURES

- Second-story deck with mountain views
- Covered entry stoop
- Designer kitchen
- Unique, contemporary design
- Two dedicated tandem parking spaces, one covered
- Double-height private entry
- Alley access
- Wood-burning fireplace (optional)

— UPPER LEVEL —



— LOWER LEVEL —



SAGE

DUPLEX | CONDO
1 BED, 1 BATH
817 SQ FT

EFFORTLESS LIVING WITH SCENIC CHARM

Welcome to Sage – a thoughtfully designed one-bedroom condo offering stunning views, upscale finishes, and unbeatable value. Enjoy a bright eat-in kitchen that flows into a spacious living room, a private front entry stoop, a generous side yard, and dedicated parking. Stylish, simple, and full of heart, Sage is your perfect home base at The Crossing.



RESIDENCE FEATURES —

- | | |
|-----------------------------|-----------------------------------|
| Covered entry stoop | Dedicated parking space |
| Main level primary | Alley access |
| Unique, contemporary design | Wood-burning fireplace (optional) |

— LOWER LEVEL —

